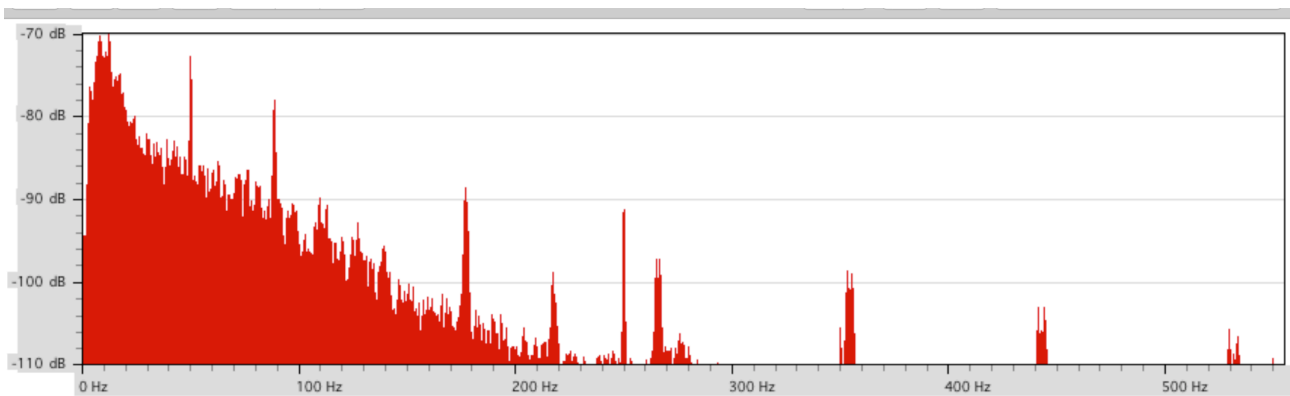
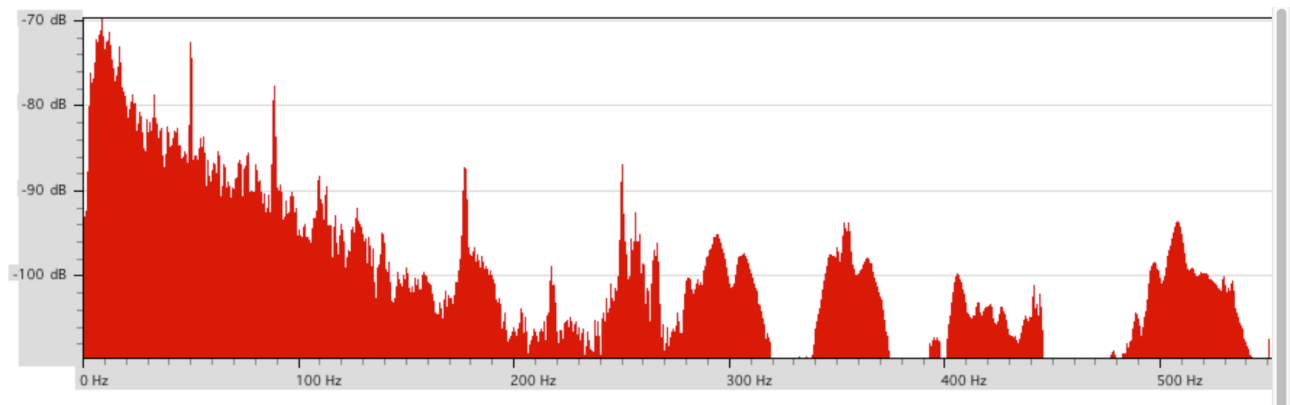


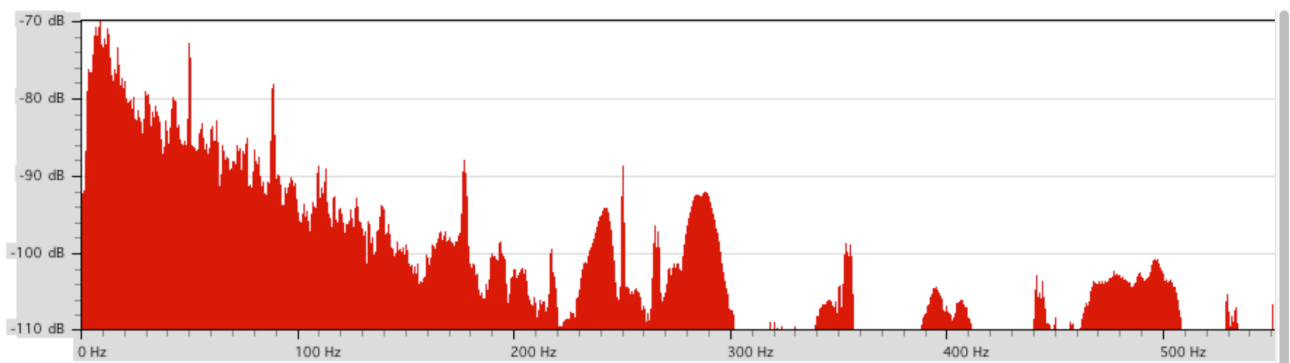
Spectrum with no sound on my Linn Axis below playing a silent groove. The sharp peaks are noise generated by the computer and can be used as internal reference.



Below is a recording from a sweep in the room from CD while the record is playing a silent groove. Here record lid is off:



The same but with record lid on:



It seems that there are two things happening. First there is a shift of peaks in frequency to lower frequencies. Second, the level of most peaks above 300 Hz are lower.