

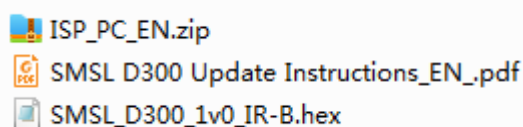
# Update the SMSL D300 MCU firmware

## Brief :

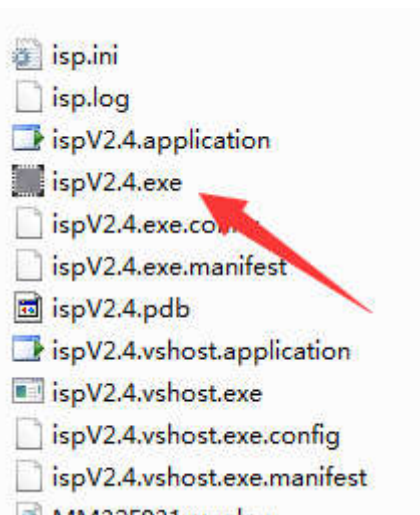
This document describes the program to upgrade the D300 main CPU, not the USB program. The upgrade method is to connect the windows PC via USB to upgrade. Please be careful not to turn off the power during the upgrade!

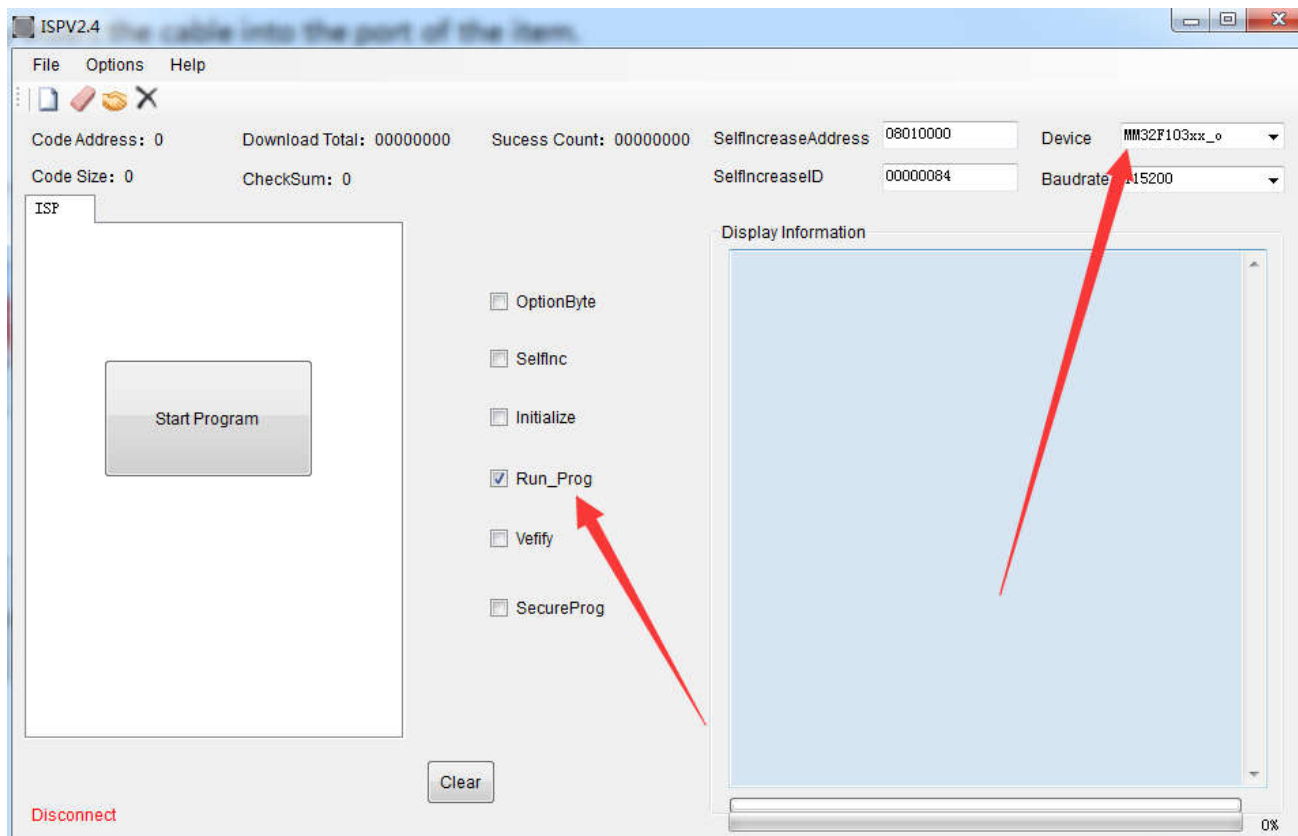
## Steps :

- 1 ) Don't supply power to D300 first.
- 2 ) Unzip files,the firmware ordinarily packed in Zip file, and the file name, for example, is "XX\_MCU\_FW.zip" .
- 3 ) After unzip, the file is like:

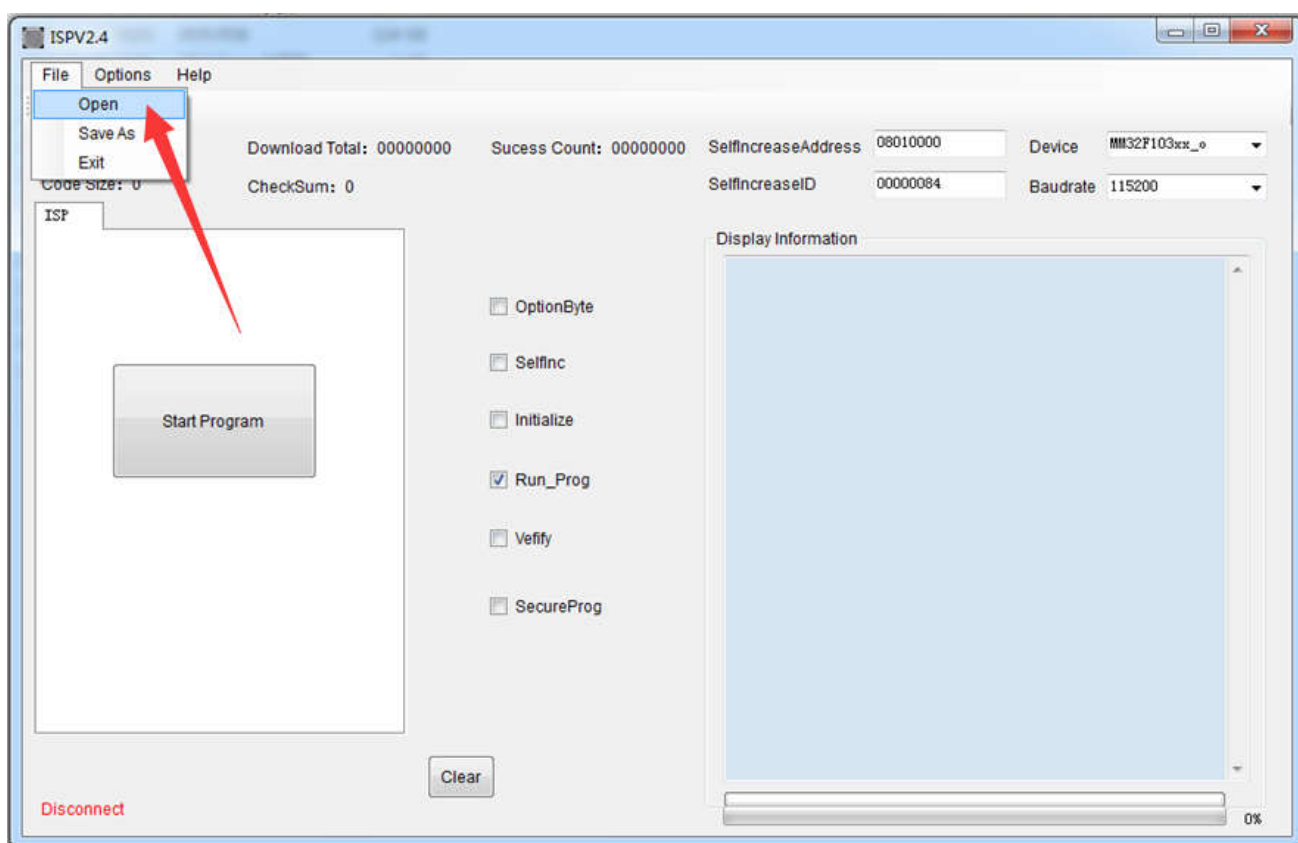


- 4 ) Unzip the file "ISP\_PC\_EN" ;open the file "ispV2.4.exe" .( This software does not need to be installed).

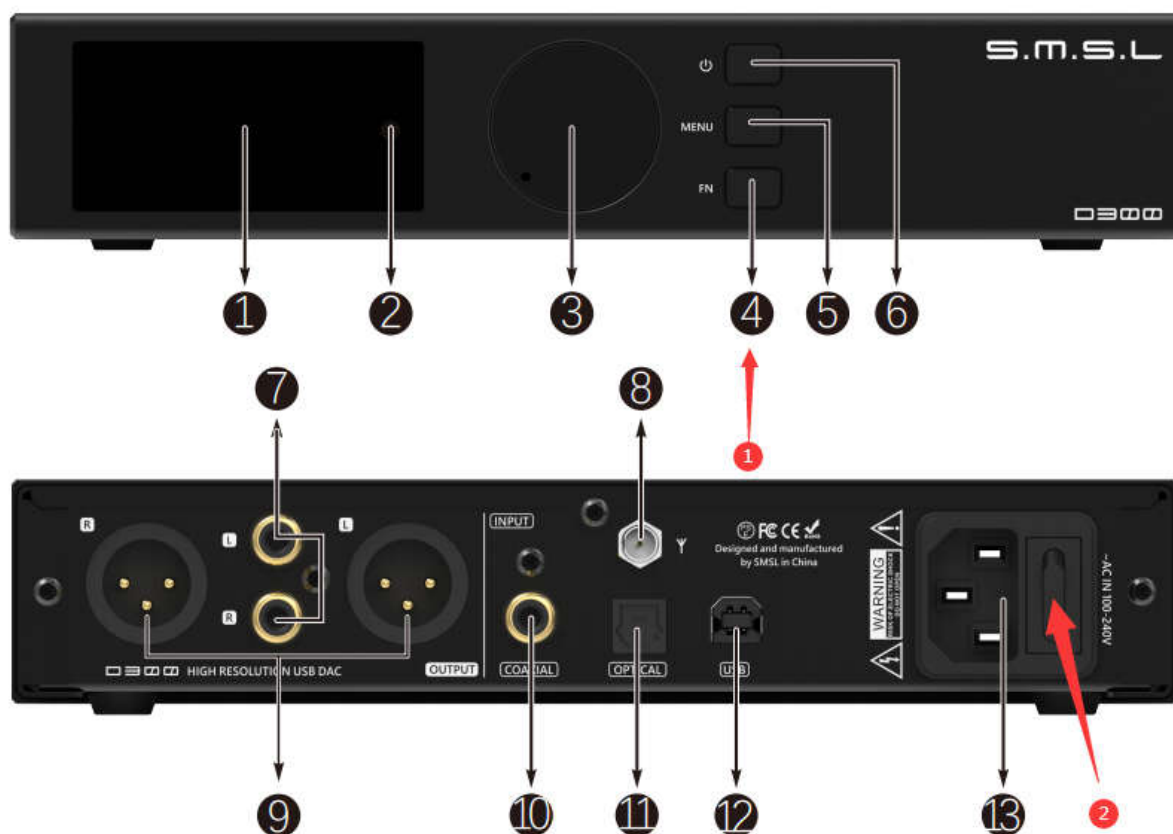




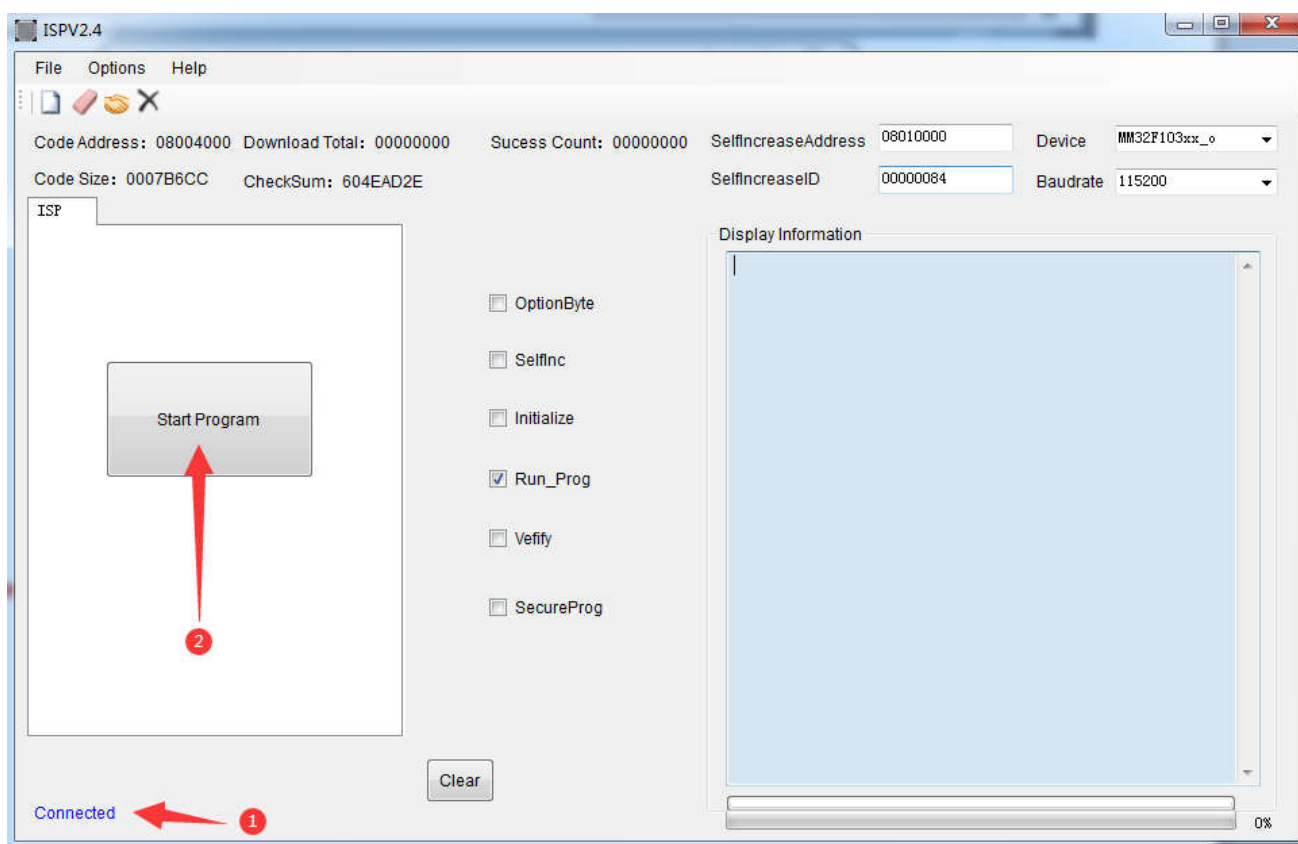
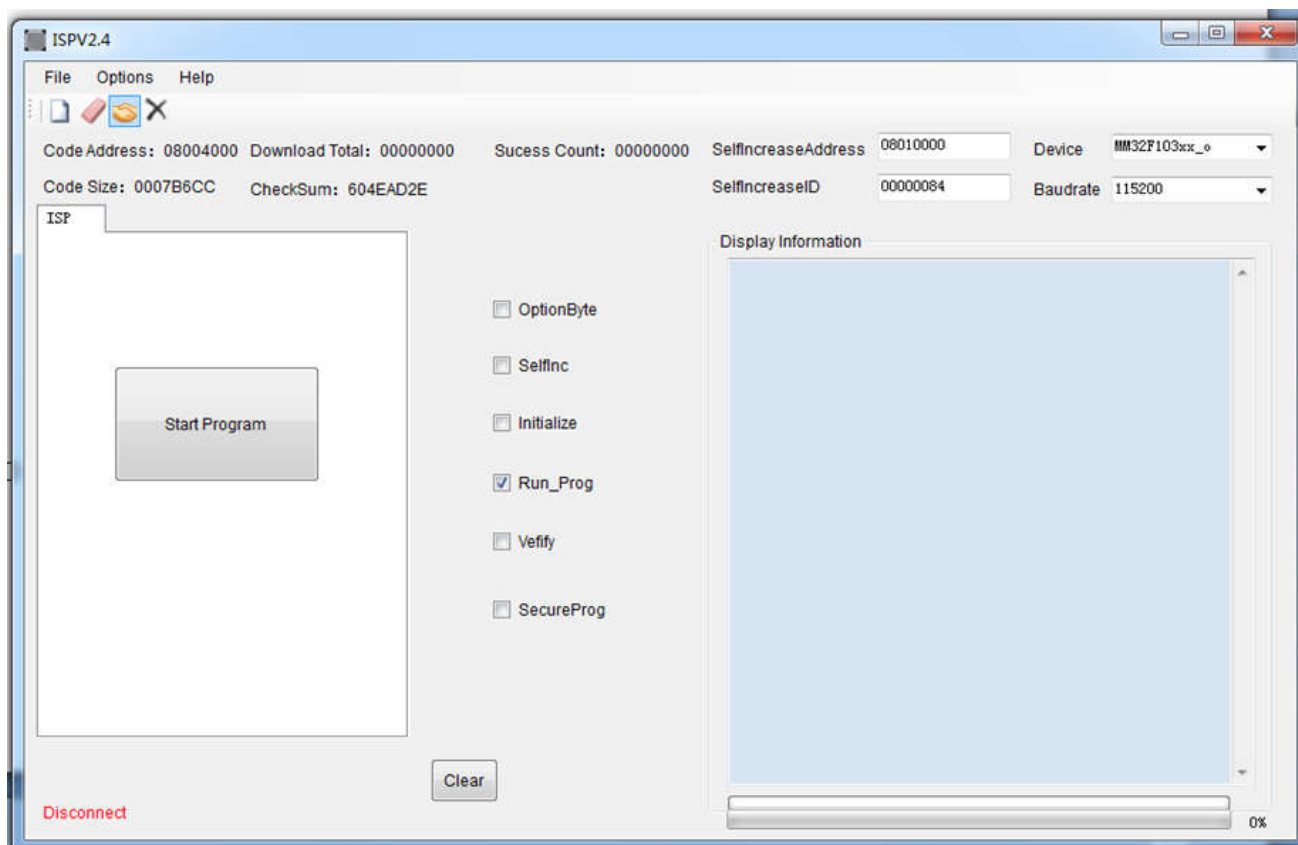
5 ) Operation according to picture show. File → Open → Select the firmware you want to update "SMSL\_D300\_XXX.hex" , then wait for the program to load the firmware, this process takes about 30 seconds.



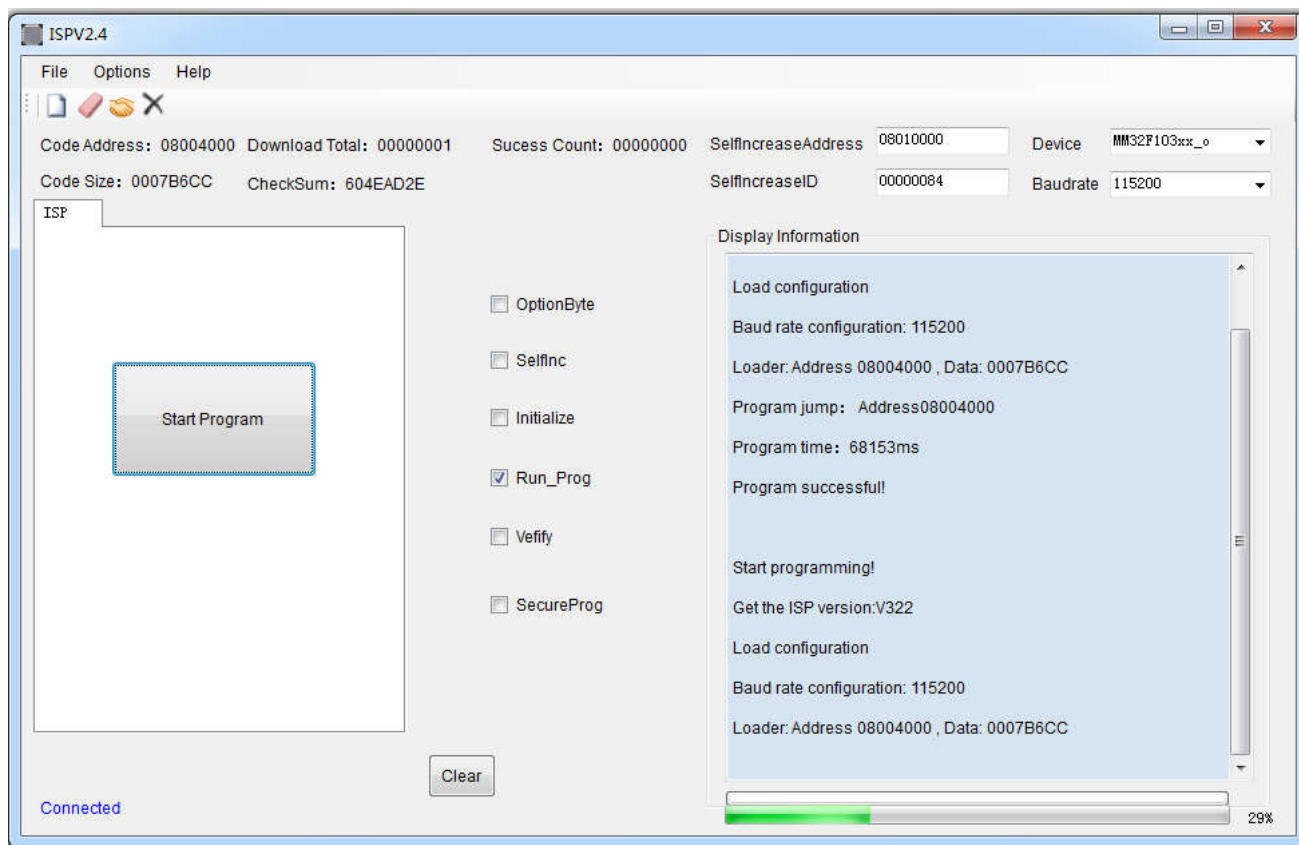
6 ) Connect the D300 to the computer via USB cable. Press and hold the FN button, then turn on the power, and release the button after 5 seconds. **If you see the D300 starts normally, you need to repeat this operation (when entering the upgrade mode, D300 screen will not light up).**



7) Click the connection  , Show the "Connected" and click the "Start Program" .



8 ) Wait for the finish.



9 ) If the window shows like this, it is done!

