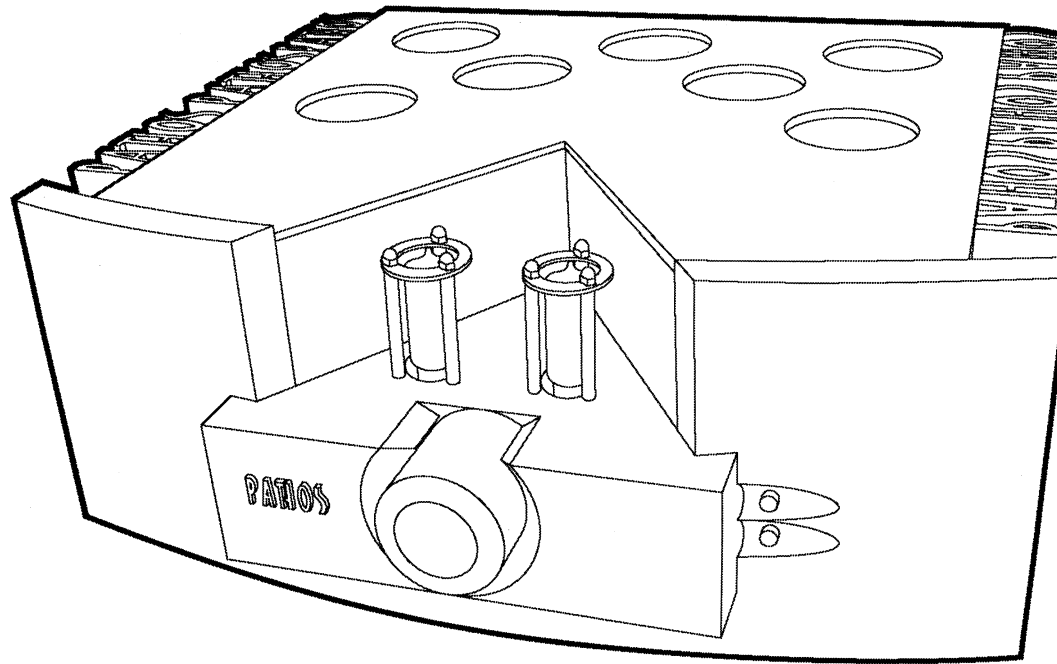


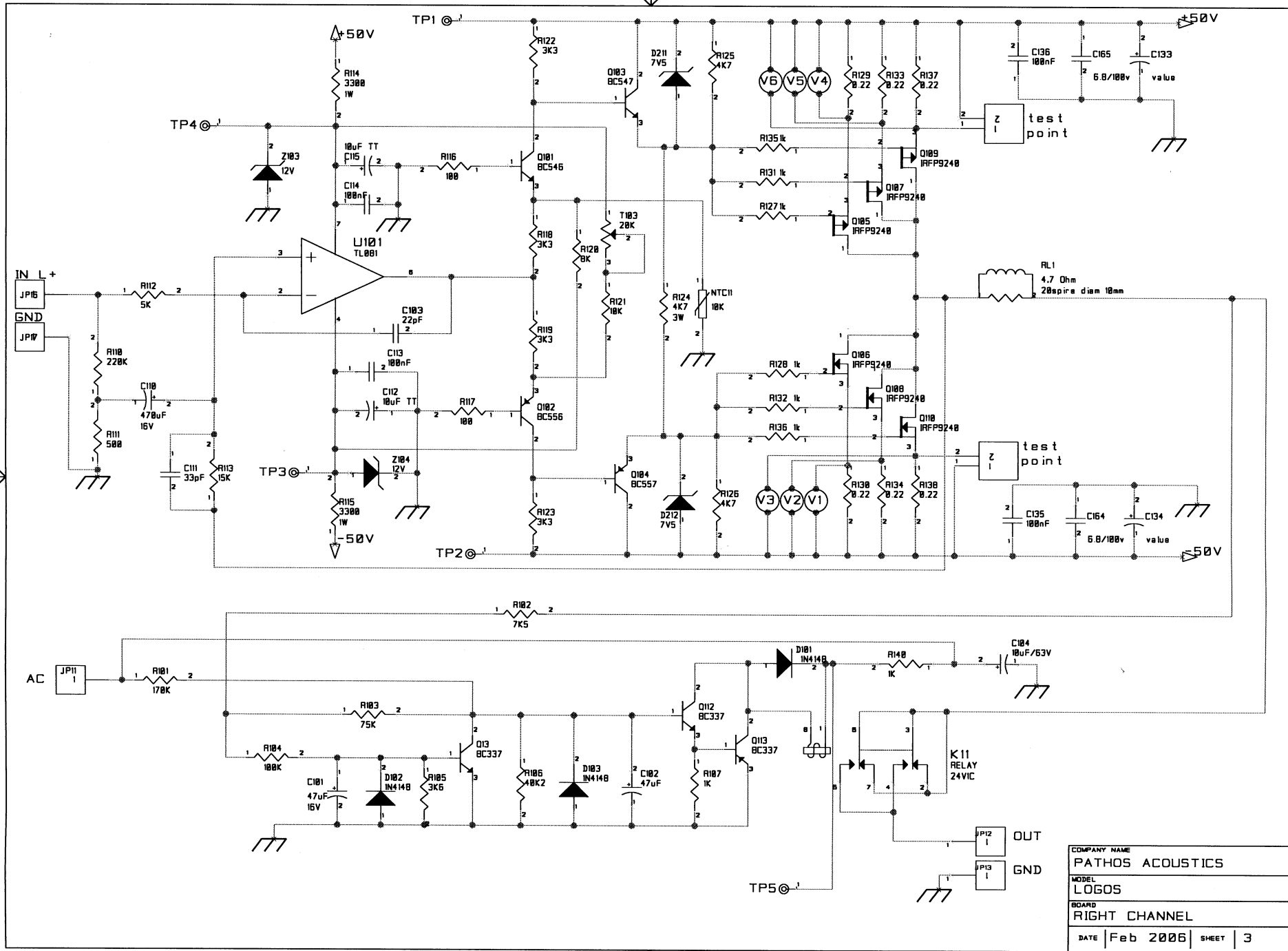
**PATHOS**

# Logos



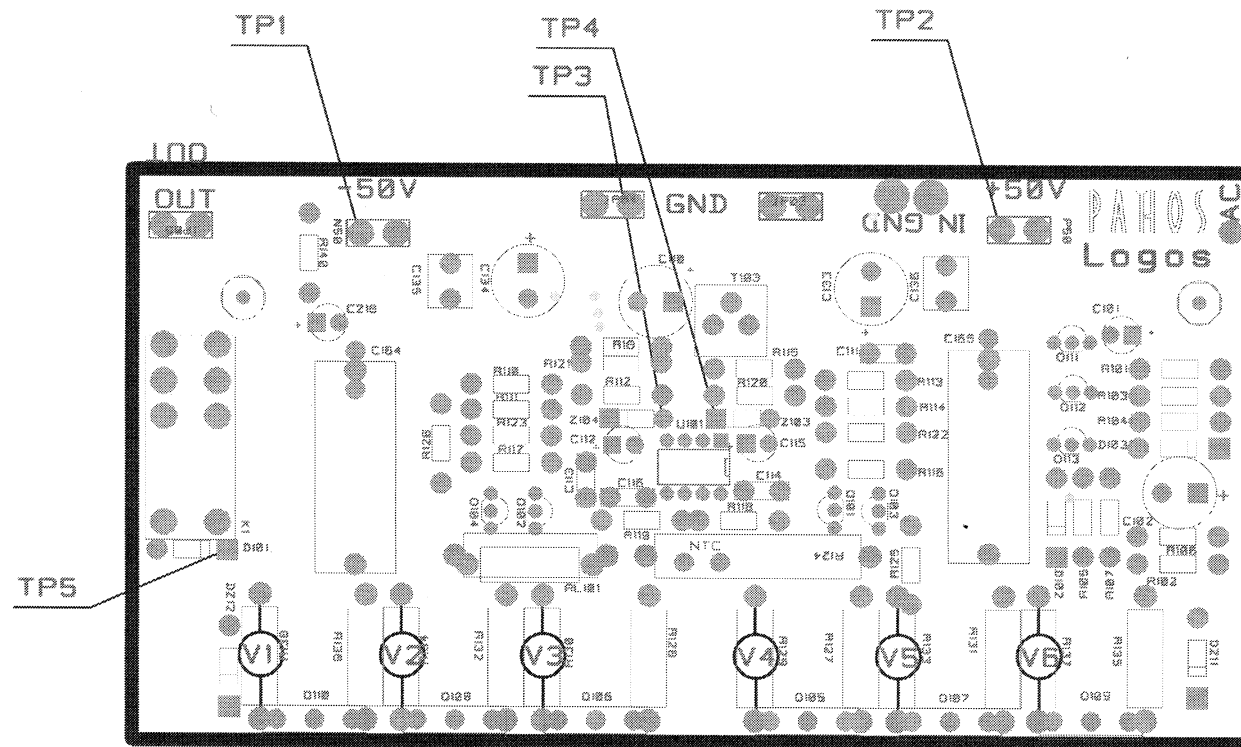
## Service manual

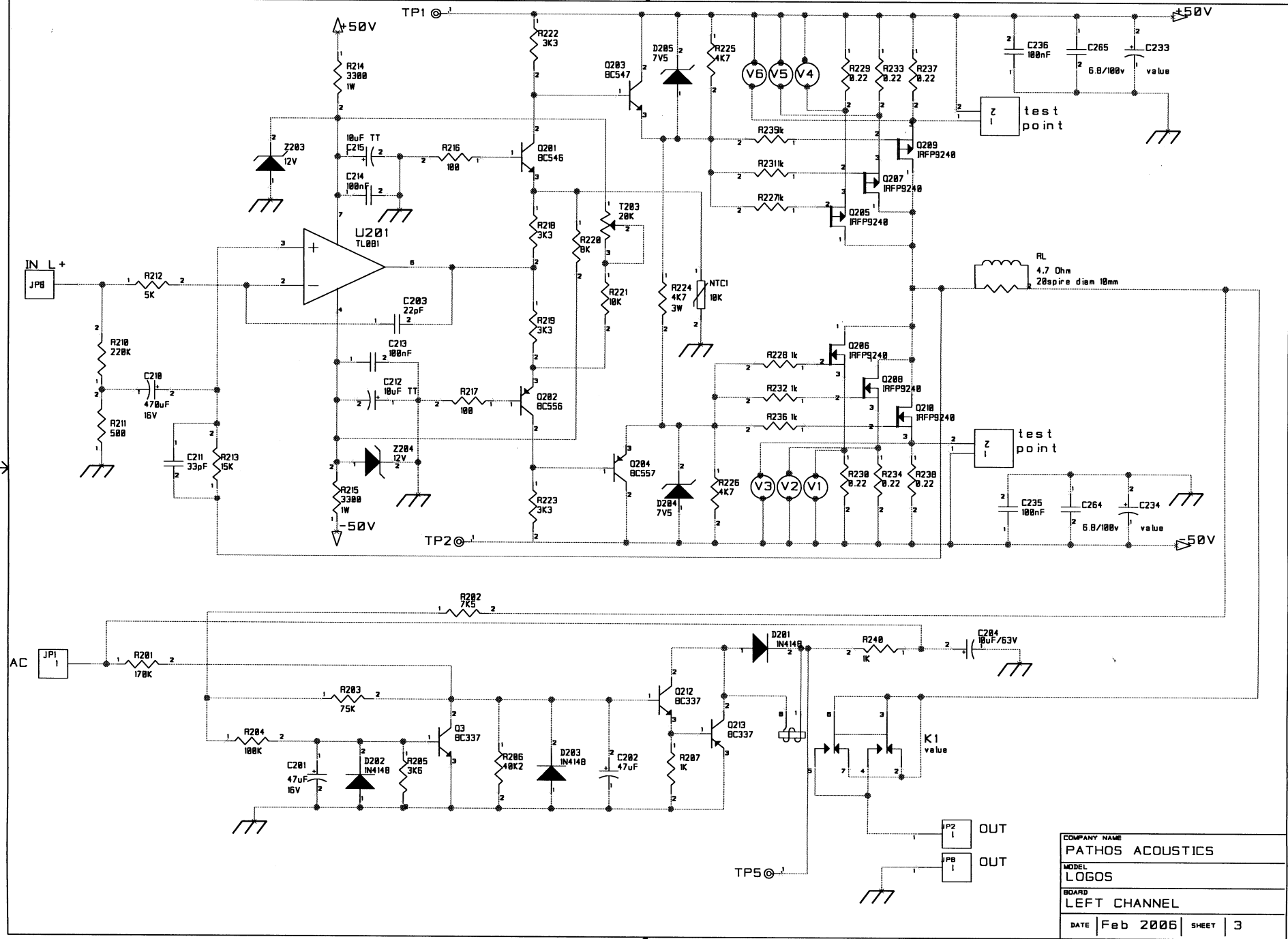
Power Amp Left & Right		
Test Point	Voltage relative to ground	Bias adjustment voltage
TP1	-54,0V DC	
TP2	54,0V DC	
TP3	-12V DC	
TP4	+12V DC	
TP5	26V DC	
V1		21-40mV DC
V2		21-40mV DC
V3		21-40mV DC
V4		21-40mV DC
V5		21-40mV DC
V6		21-40mV DC
		<p>Adjust T 103 to reach a total bias current of about</p> $90 \text{ [mV]} / 0,22 \text{ [Ohm]} = 410 \text{ [mA]}$ <p>That means to get about 30 mV For each resistor 0.22 Ohm <math>V1+V2+V3= 90\text{mV}</math></p>



COMPANY NAME		
PATHOS ACOUSTICS		
MODEL		
LOGOS		
BOARD		
RIGHT CHANNEL		
DATE	Feb 2006	SHEET 3

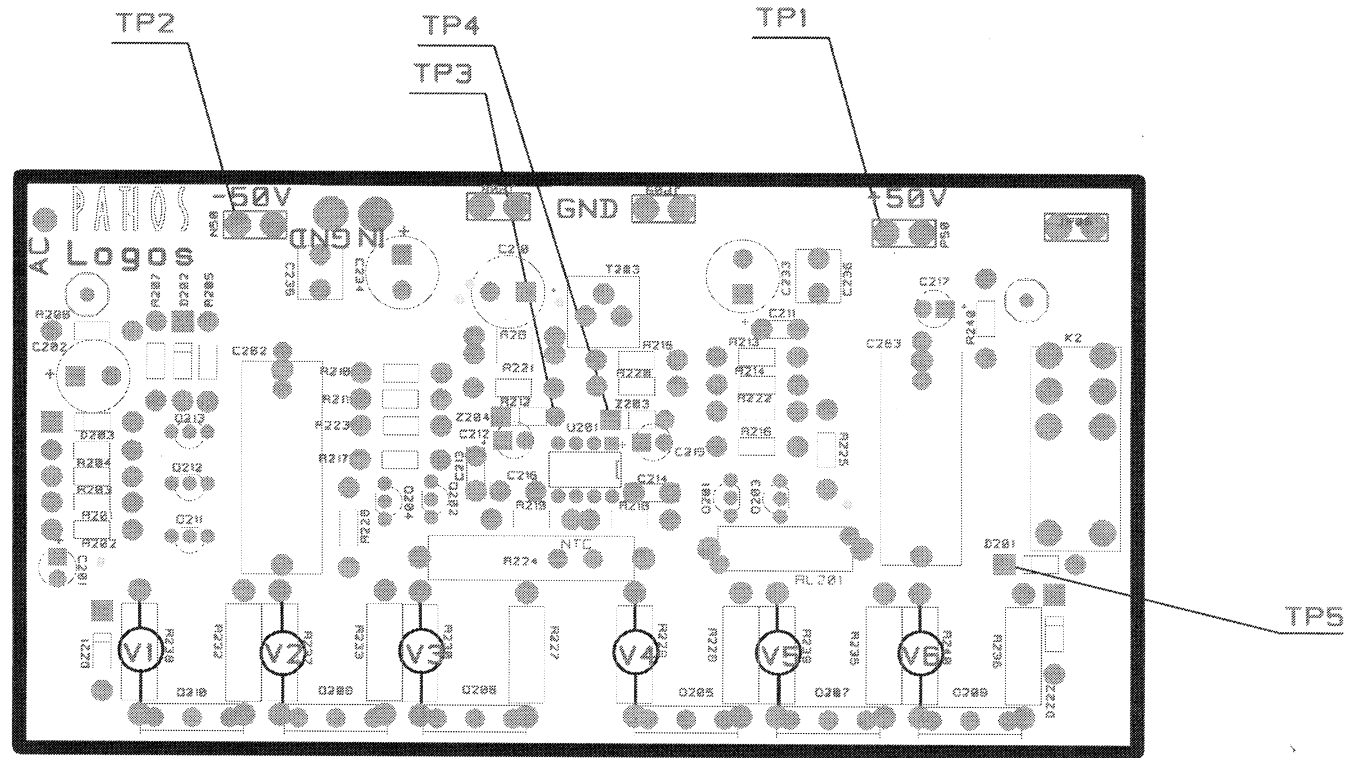
# Power Amp



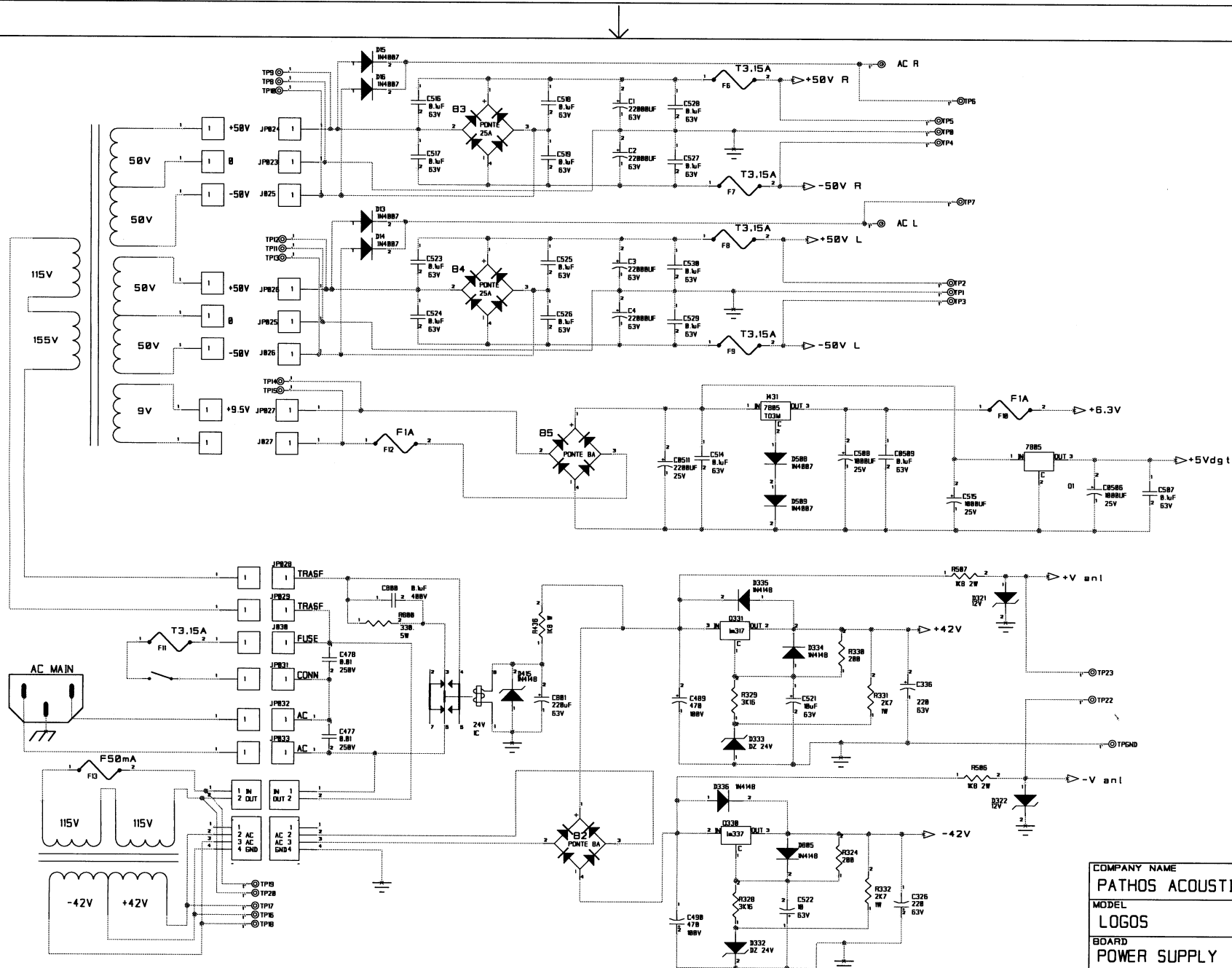


COMPANY NAME	PATHOS ACOUSTICS
MODEL	LOGOS
BOARD	LEFT CHANNEL
DATE	Feb 2006
SHEET	3

# Power Amp

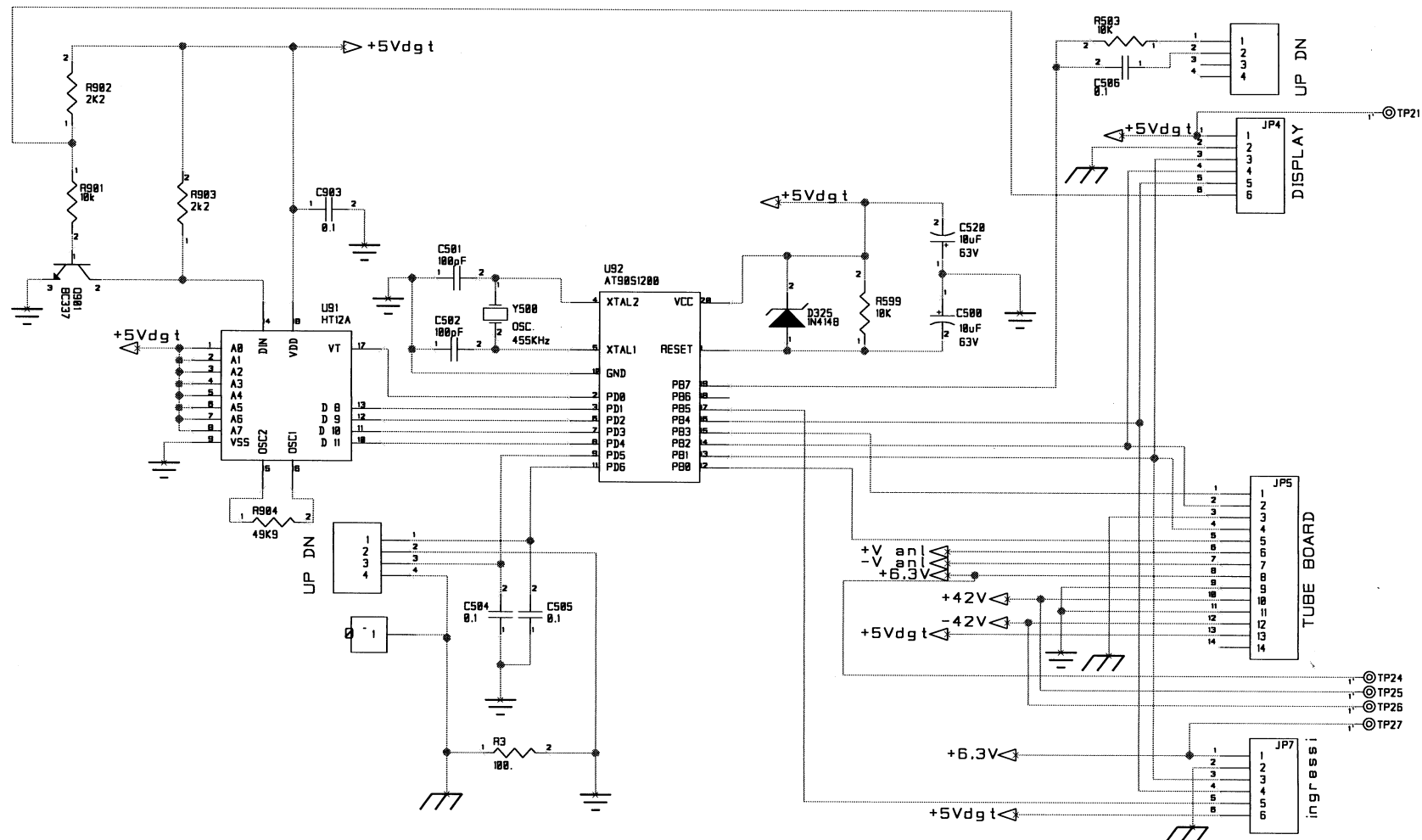


Power Supply & Microcontroller	
Test Point	Voltage relative to ground
TPGND	GND 0V
TP0	GND 0V
TP1	GND 0V
TP2	54,0 V DC
TP3	-54,0 V DC
TP4	-54,0 V DC
TP5	54,0 V DC
TP6	40-45V DC
TP7	40-45V DC
TP8-TP9	41V AC
TP8-TP10	41V AC
TP11-TP12	41V AC
TP11-TP13	41V AC
TP14-TP15	9,6V AC
TP19-TP20	AC MAIN
TP16-TP17	42V AC
TP16-TP18	42V AC
TP21	5,05V DC
TP22	-12V DC
TP23	+12V DC
TP24	+6,30V DC
TP25	+41,5V DC
TP26	-41,5V DC
TP27	6,30V DC



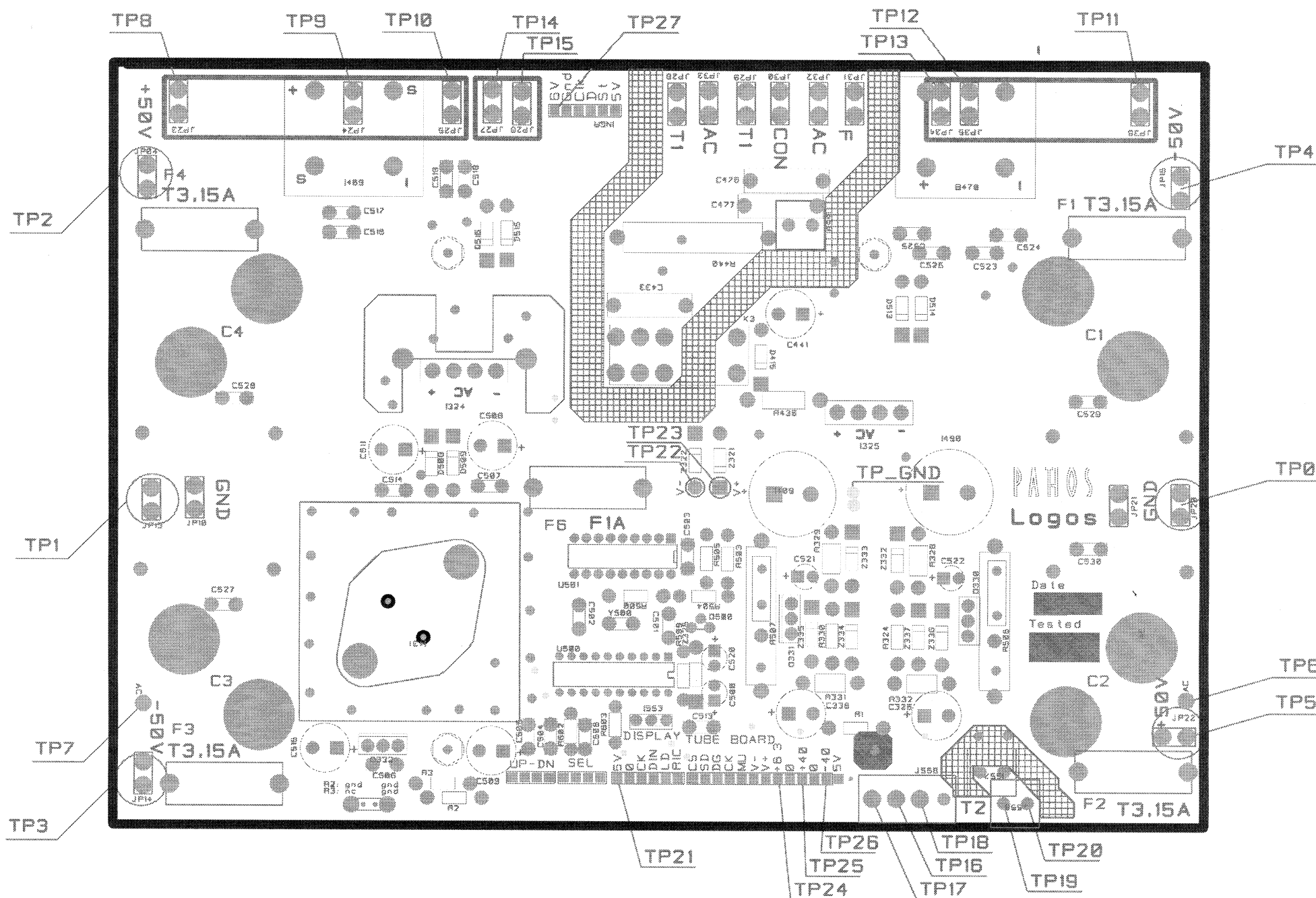
COMPANY NAME		
PATHOS ACOUSTICS		
MODEL		
LOGOS		
BOARD		
POWER SUPPLY		
DATE	Feb 2006	SHEET 3



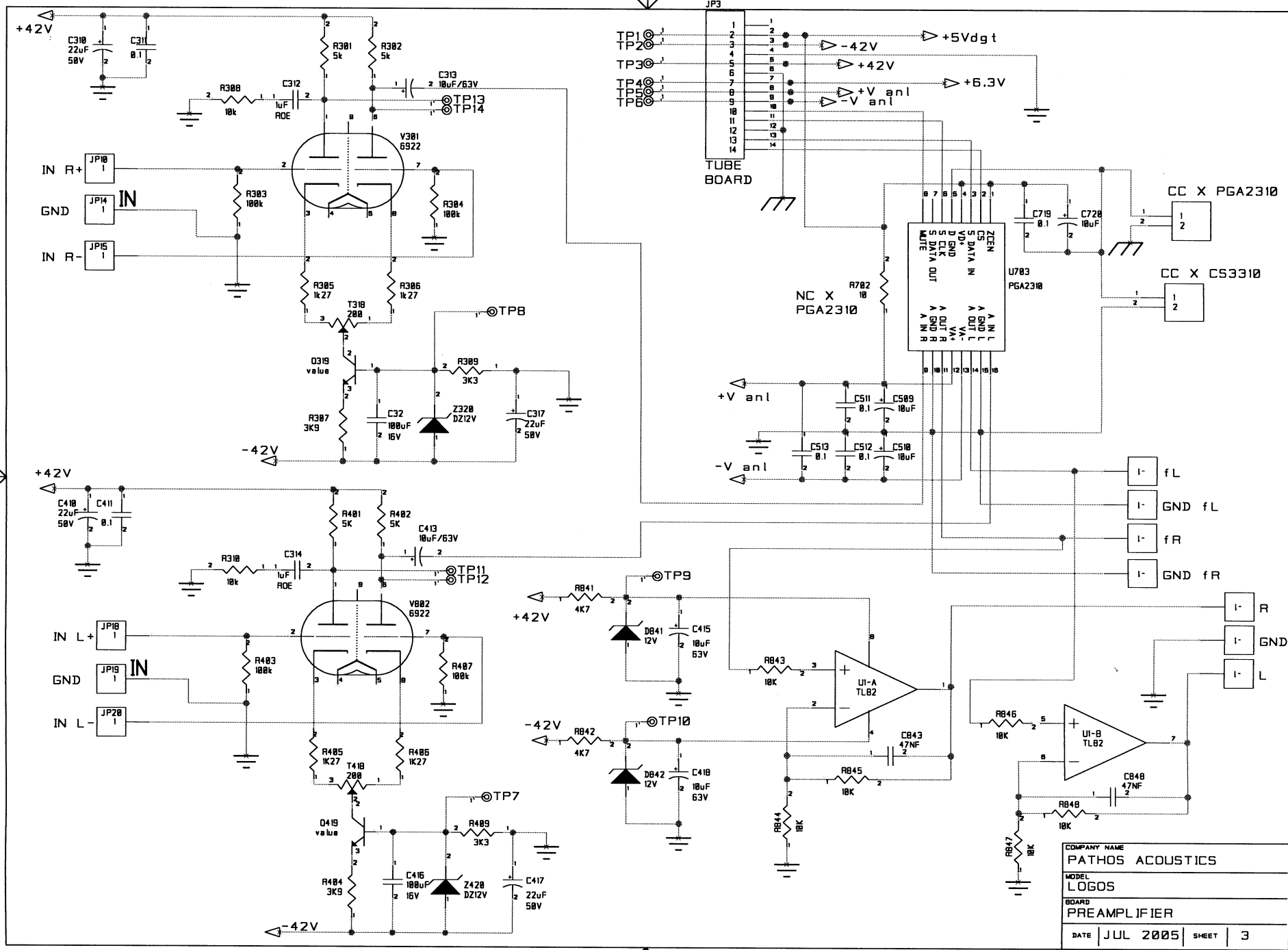


COMPANY NAME			
PATHOS ACOUSTICS			
MODEL			
LOGOS			
BOARD			
MICROCONTROLLER			
DATE	Feb 2006	SHEET	3

## Logos - Power supply and microcontroller -

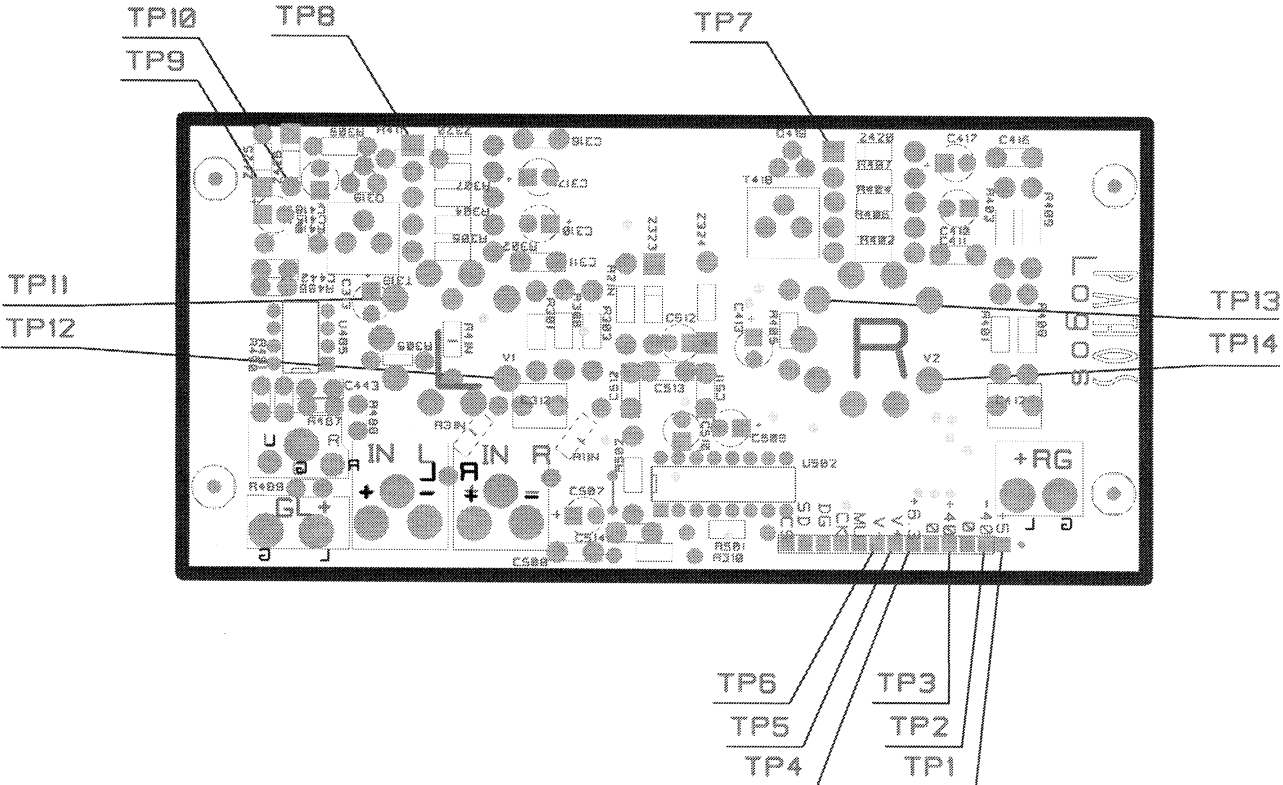


Preamplifier	
Test Point	Voltage relative to ground
TP1	5,05V DC
TP2	-41,5V DC
TP3	+41,5V DC
TP4	+6,3V DC
TP5	+12V DC
TP6	-12V DC
TP7	29,5V DC
TP8	-29,5V DC
TP9	12,2V DC
TP10	-12,2V DC
TP11	29,5V DC
TP12	29,5V DC
TP13	29,5V DC
TP14	29,5V DC

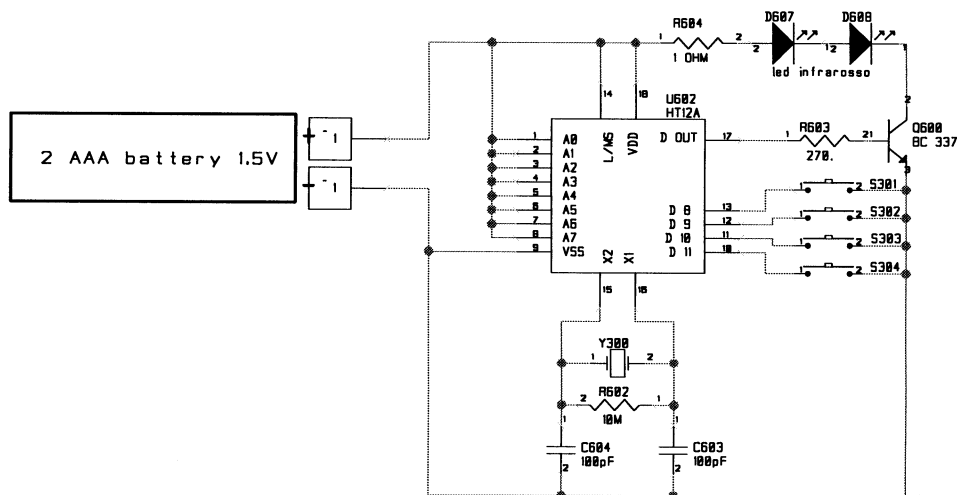
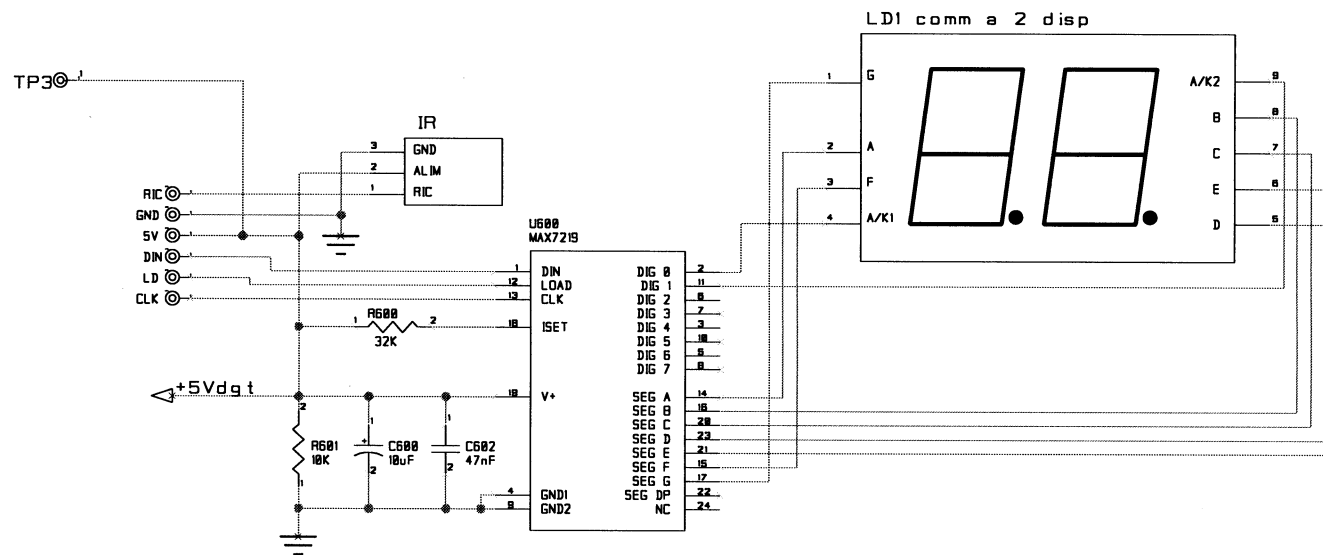


COMPANY NAME	PATHOS ACOUSTICS
MODEL	LOGOS
BOARD	PREAMPLIFIER
DATE	JUL 2005
SHEET	3

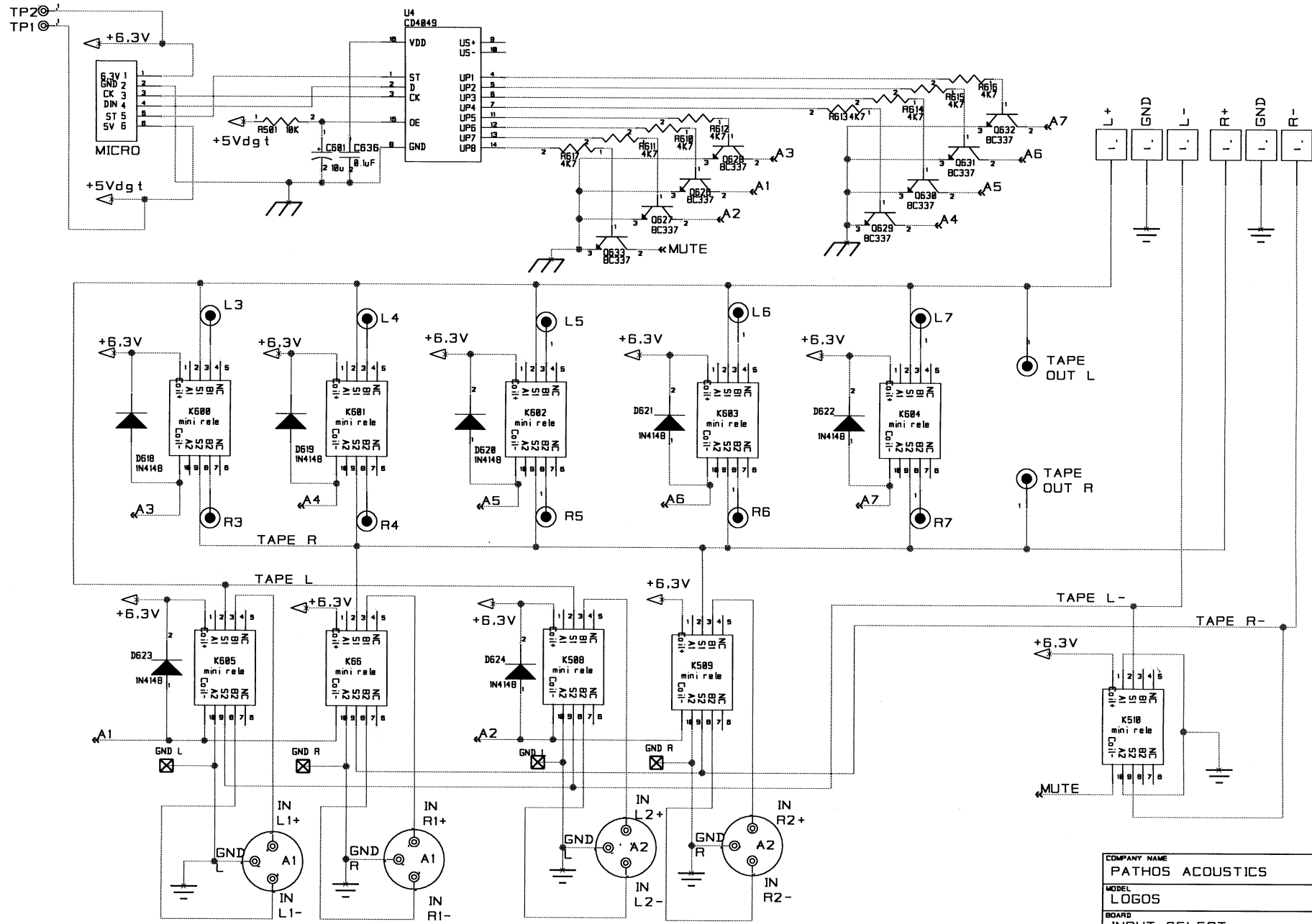
# Preamplifier



Input selector, Display & Remote control	
Test Point	Voltage relative to ground
TP1	5V DC
TP2	6,3V DC
TP3	5V DC



COMPANY NAME			
PATHOS ACOUSTICS			
MODEL			
LOGOS			
BOARD			
DISPLAY REMOTE CONTROL			
DATE	JUL 2005	SHEET	3



COMPANY NAME		PATHOS ACOUSTICS	
MODEL		LOGOS	
BOARD		INPUT SELECT	
DATE	OCT 2005	SHEET	3



[illegible][illegible]